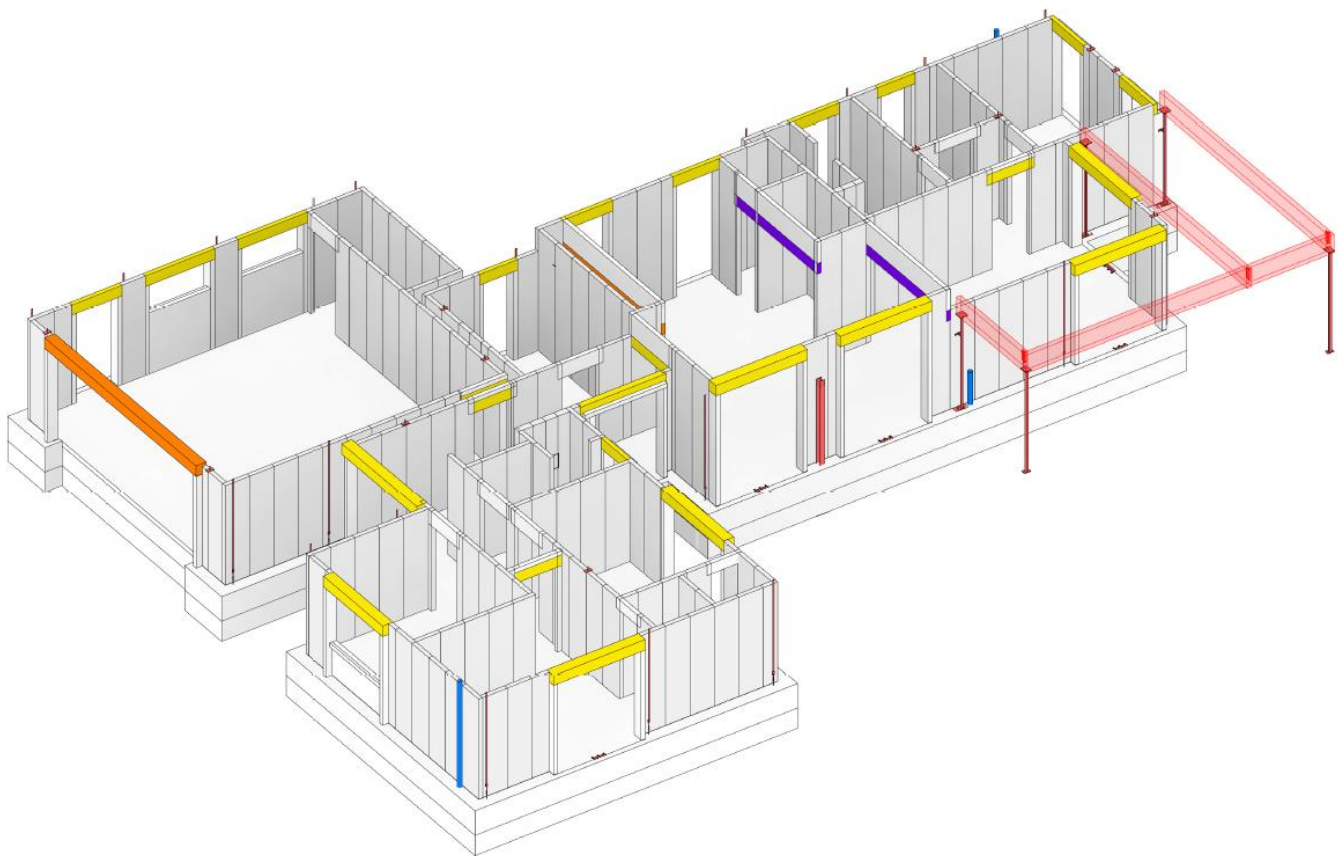


# AireX –

## Panel Installation Guide



**AireX Panels** are typically produced in std. widths of 600mm in heights between 2400 and 3000mm and depths from 50-200mm, the upright panels are suitable for use as partitions and in some cases load-bearing walls in residential and commercial applications.



Residential project with ca. 200 upright AireX panels.

AireX panels must be supported until all joints in a section have been completed and the binding mortar has cured allowing the wall panels to stand firmly without support.



# AireX –

## Panel Installation Guide



Depending on the size of panel and density of AireX concrete used, the panels can be handled by 1-2 persons manually or by using simple lifting and transportation equipment designed for the installation of wall panels.

AireX panels are fiber reinforced and can sustain manual handling and transportation on a construction site.

At the install location, the panels can be tilted up and pushed into position using a traditional hand truck and finally “rockin” the panel into its exact position.

For safety reasons it is advisable to always be at least 2 persons handling one wall panel.

Some installation crew use small trolleys specially designed to carry a wall panel lengthwise through door openings etc.

