

AireX –

MEP Installation Guide



AireX Panels are typically produced in depths from 75-200mm and can accommodate a large variety of MEP solutions including but not limited to:

- Electric switch boxes and plastic pipes for wires
- Plumbing, pipes and fixture boxes
- Larger holes and openings for ventilation ducts
- The mounting of air conditioning units

MEP solutions are implemented in AireX walls through the use of small handheld electric tools such as power drills and wall chasers, as well as manual tools such as hammers and chisels.

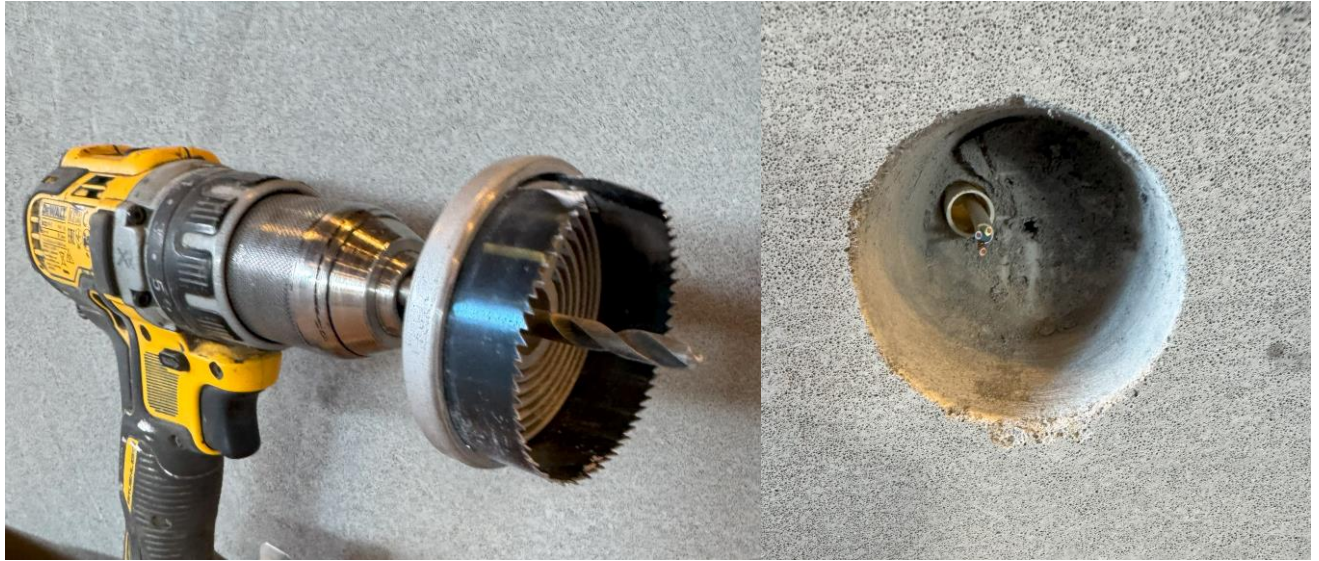
Below examples shows a variety of MEP solutions in AireX Walls.



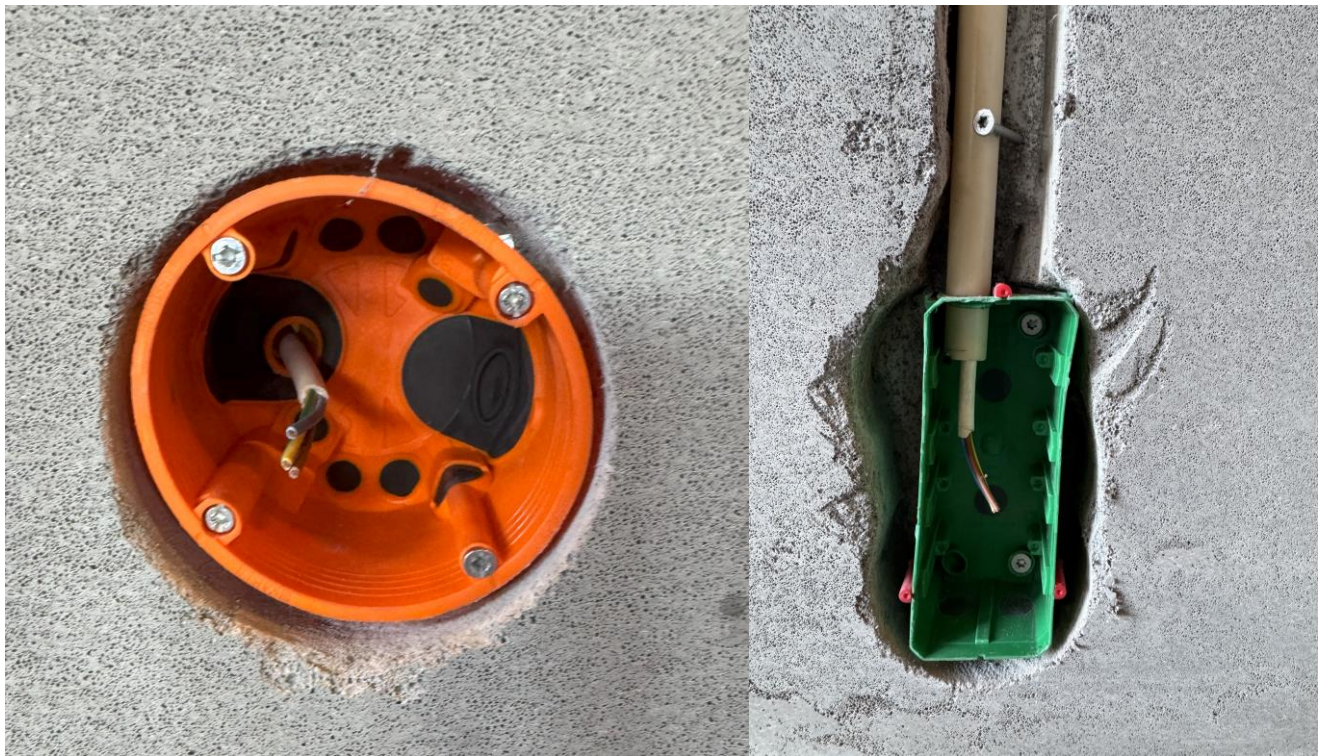
Wall chasers and chisels are used to create ducts for water and electric pipes.

AireX –

MEP Installation Guide



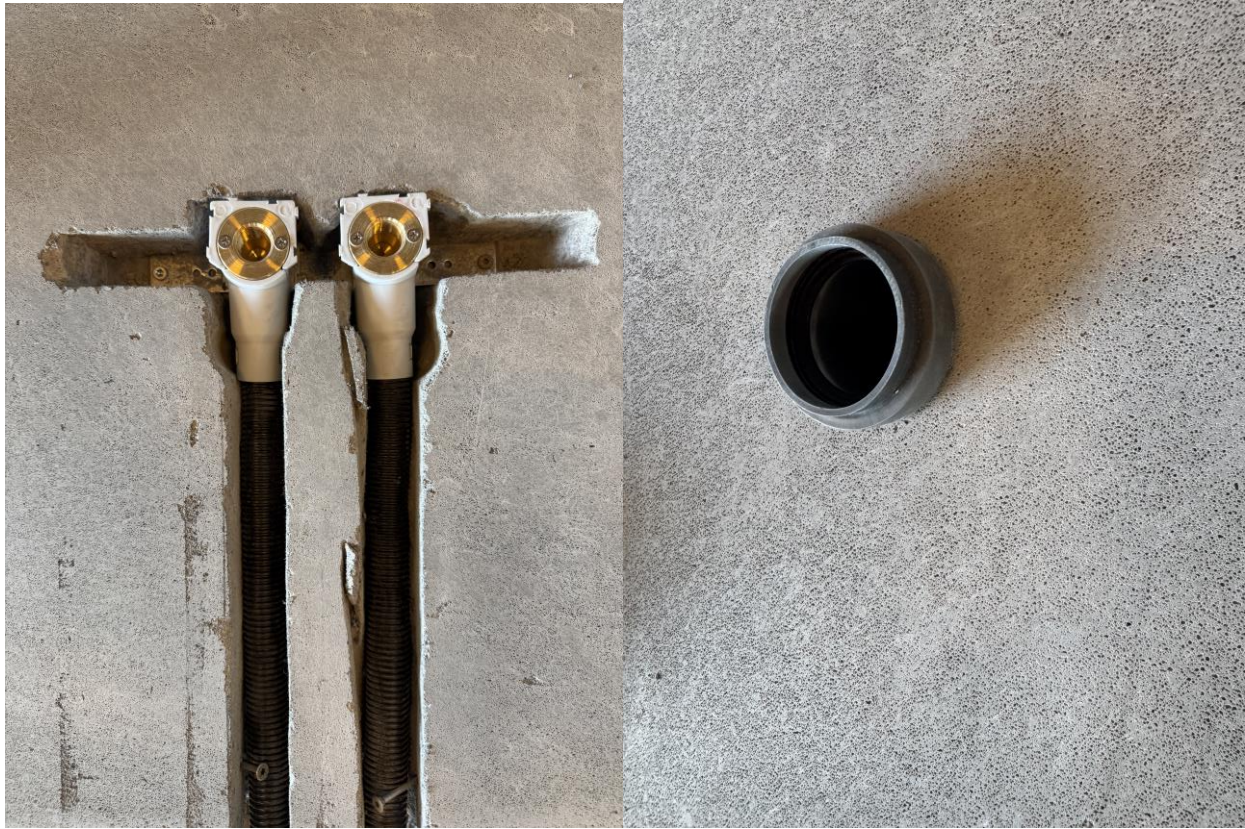
Cup drills mounted on a traditional power drill can easily create room for MEP installations in AireX walls.



Electric outlets can be made in all shapes and sizes by combining the techniques in this guide

AireX –

MEP Installation Guide



PEX Pipes for water and wall mounts for water fixtures and easily cut out as well as through holes for drains.



AireX walls can easily support larger holes of 90, 110 or 200mm for ventilation ducts.